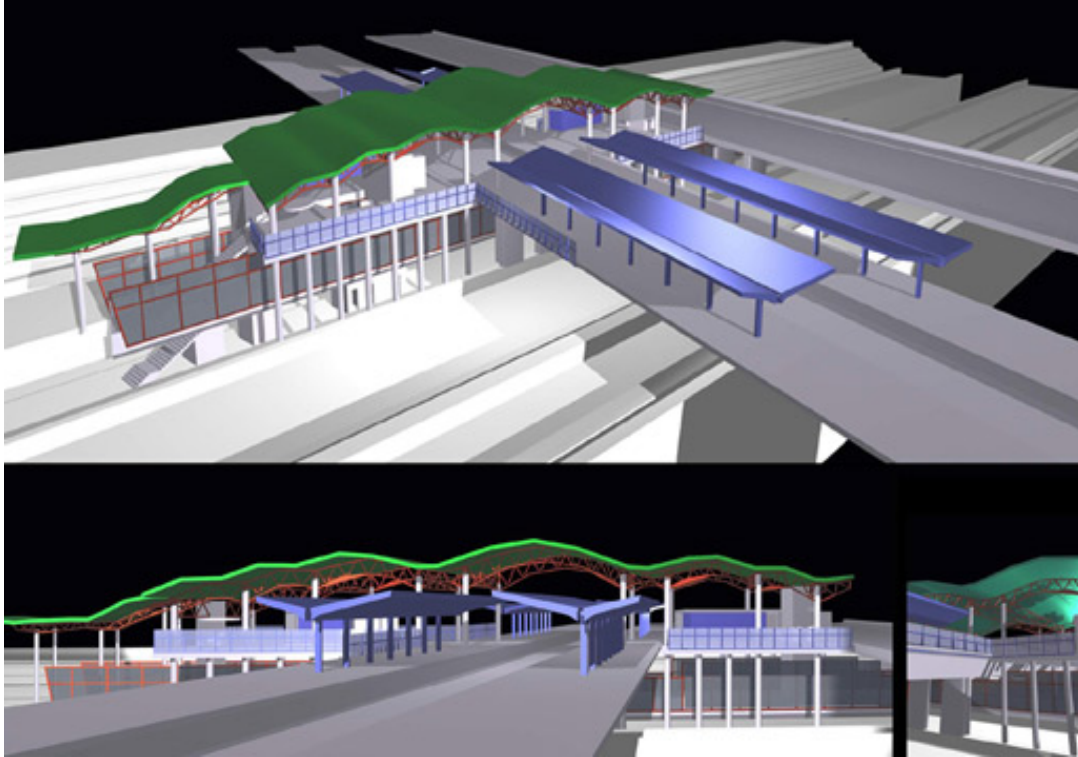


Neratziotisa Railway Station



Client: ERGA O.S.E. S.A.
Cost estimate: EUR 4.34m.

Final architectural design for the platforms and passenger circulation areas for the passenger station at the junction of the Athens to Piraeus Electric Railways with the Athens Suburban Railway and the new Attiki Road. The design comprised canopies for the passenger platforms, control centre, ticket counters, ancillary accommodation for passengers and staff, as well as M&E plant.

Neratziotisa Railway Station

