

New building for the relocation of Associations of people with disabilities in Metropolitan Po



Owner: Greek State - Municipality of Hellinikon-Argyroupoli
Client: HELLINIKON S.M.S.A/LAMDA DEVELOPMENT
Cost estimate: 13.000.000 EUR
Total Building Area: 11.800 m²

Design: 01/2020 - 03/2022- Construction: 04/2022 -10/2023

The construction of a new Building Complex for the relocation of four Associations of people with disabilities was fully designed by BETAPLAN, in the context of the Metropolitan Pole of Hellinikon- Agios Kosmas development.

The new Building actually houses the "Day Care Center" and the "Lifelong Learning Center" services of three Associations for children and adults with various disabilities, as well as, the "Information and Support Center" of the Association for people with "Multiple Sclerosis"

In order to ensure the necessary privacy and independent access and operation of each Association, the Building was designed in four wings, connected to each other through a central longitudinal axis of horizontal and vertical circulation. At the same time, common use functions, such as the indoor therapeutic swimming pool and the multipurpose /leisure Hall, are located in an independent wing, which is connected to the rest of the building complex via an open corridor.

The Architectural design was concentrated to create spaces, not only functional for the building users, mostly

New building for the relocation of Associations of people with disabilities in Metropolitan Po

children with "special" needs and skills, but at the same time pleasant and bright, purpose achieved by using the appropriate materials and colors in the Interior, as well as in the Landscape Design.

Following the completion of the Building Complex, the achieved certification, according to LEED Standards, was at grade 'PLATINUM'.

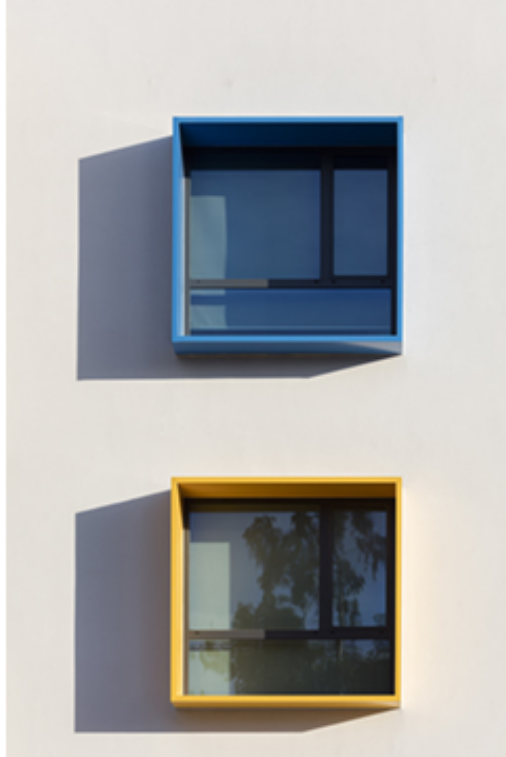
The Building Complex for the relocation of Associations of people with disabilities in the Metropolitan Pole of Hellinikon -Agios Kosmas, was also awarded as "The building of the Year 2023" after a vote conducted by the magazine "Ypodomes".

Photographer: YIORGOS KORDAKIS

New building for the relocation of Associations of people with disabilities in Metropolitan Po



New building for the relocation of Associations of people with disabilities in Metropolitan Po



New building for the relocation of Associations of people with disabilities in Metropolitan Po



New building for the relocation of Associations of people with disabilities in Metropolitan Po



New building for the relocation of Associations of people with disabilities in Metropolitan Po



New building for the relocation of Associations of people with disabilities in Metropolitan Po



New building for the relocation of Associations of people with disabilities in Metropolitan Po



New building for the relocation of Associations of people with disabilities in Metropolitan Po



New building for the relocation of Associations of people with disabilities in Metropolitan Po



New building for the relocation of Associations of people with disabilities in Metropolitan Po



New building for the relocation of Associations of people with disabilities in Metropolitan Po



New building for the relocation of Associations of people with disabilities in Metropolitan Po



New building for the relocation of Associations of people with disabilities in Metropolitan Po

